



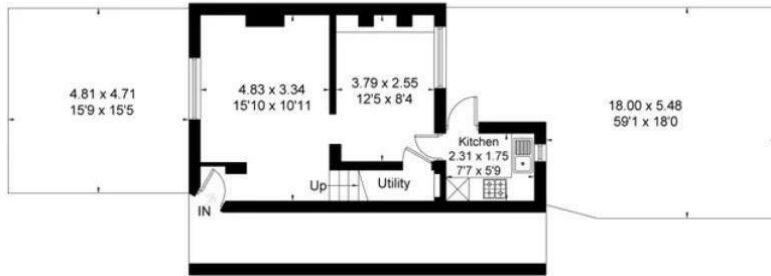
7 ASMUNS PLACE

NW11 7XE

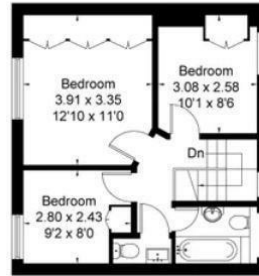
£2,600

A 3 bedroom unfurnished cottage style property situated in the Hampstead Garden Suburb Conservation Area. Wood flooring throughout the ground floor, carpet on stairs and in the bedrooms. A fitted kitchen, three good size bedrooms with fitted wardrobes, family bathroom with shower over bath, and a separate WC, private garden and gas central heating. Located near Temple Fortune amenities and 0.9 miles from Golders Green Underground Station, this area features picturesque homes, close proximity to green spaces like Big Wood, and reputable schools.

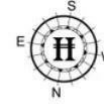
david harris & co



Ground Floor



First Floor



Approximate Area
 Ground Floor = 34.4 sq m / 370 sq ft
 First Floor = 39.9 sq m / 429 sq ft
 Total = 74.3 sq m / 799 sq ft
 Including Limited Use Area
 (1 sq m / 11 sq ft)

Surveyed and drawn in accordance
 with the International Property
 Measurement Standards
 (IPMS 2: Residential)
 fourwalls-group.com 246233



Energy Efficiency Rating		Current	Potential
Very energy efficient - lower running costs			
(92 plus) A			
(81-91) B			
(69-80) C			
(55-68) D			
(39-54) E			
(21-38) F			
(1-20) G			
Not energy efficient - higher running costs			
England & Wales		EU Directive 2002/91/EC	

Agents Note: Whilst every care has been taken to prepare these particulars, they are for guidance purposes only. All measurements are approximate and are for general guidance purposes only and whilst every care has been taken to ensure their accuracy, they should not be relied upon and potential buyers/tenants are advised to recheck the measurements

Finchley Lettings
 358 Regents Park Road
 Finchley
 London
 N3 2LJ

020 8346 9122
 info@davidharris.co.uk
 www.davidharris.co.uk

david harris & co